



Oil & gas
solutions

 **MANITOU**
HANDLING YOUR WORLD

GEHL

MUSTANG 



Sustainable partner in an innovating world

A main player in the oil and gas business

For over 20 years, we have understood the industrial safety, productivity and service issues that you have to deal with at every stage of a project. From the construction of your infrastructure, to operation support and equipment maintenance.

Manitou Group researches, designs, and manufactures a wide range of dedicated machines, well known for their reliability, performance and robustness. They prove themselves day after day in the most extreme working conditions.

Our network of 1,400 expert dealers provides you with services essential to your business, including after-sales support, maintenance, training and financing.

With capacities from 0,5 to 40 tons (t) (from 1,100 to 80,000 pounds (lbs.)) and lift heights from 6 to 43.3 meters (m) (19'60" to 142'), Manitou Group has the solution to all your material handling needs.





3 brands
distributed by
1,400 dealers
in 140 countries

 **MANITOU** | **GEHL** | **MUSTANG**





CONTENT
Oil & gas
solutions

Corporate social responsibility	4
--	---

Reduce program	5
-----------------------------	---

Manitou group range	6
----------------------------------	---

Manitou service range

1.1 Spare parts.....	14
1.2 Training	15
1.3 Financing and renting.....	16
1.4 Maintenance.....	17
1.5 Warranty extension	18
1.6 Fleet management.....	19

Safety first

2.1 Intrinsic safety.....	22
2.2 Safety options	23
2.3 Cab	24
2.4 Lighting	25
2.5 Visibility.....	26
2.6 Machine maintenance and servicing	27
2.7 Hydraulic options	28
2.8 Assists driving and prevents shocks	29
2.9 Special environments.....	30

Attachments

3.1 Pipe handling	
3.1A Tube clamps	34
3.1B Tube grab.....	36
3.1C Coated tubes	38
3.2 Reel handling.....	40
3.3 Forks and carriages	42
3.4 Suspended loads	44
3.5 Personnel lifting	46
3.6 Loading and re-handling.....	48
3.7 Drum handling	50
3.8 Cleaning.....	51
3.9 Non-conventional oil	
3.9A Cylinder handler	52
3.9B Tyre handler.....	53

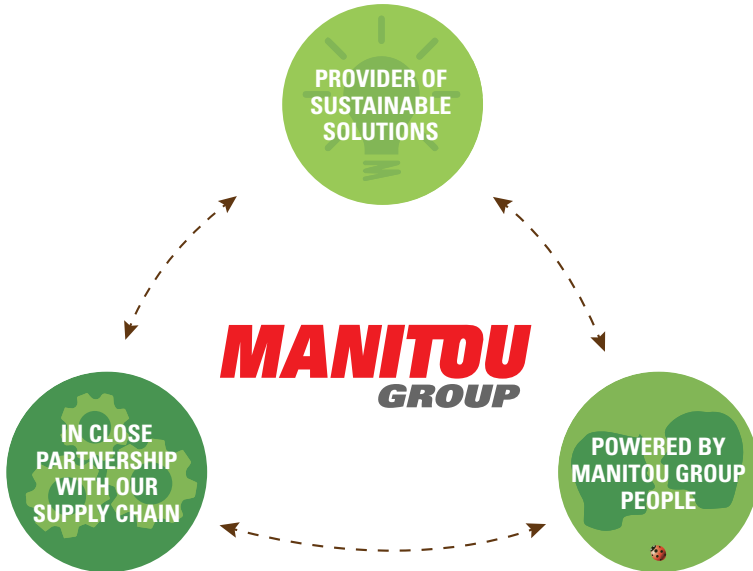
Atex

4.1 Atex.....	56
----------------------	----



Our Elevation Plan: 3 MAJOR COMMITMENTS

Monitored in an operational action plan
To meet the challenges facing us



Number 1 at GAÏA INDEX

November 2014

Manitou Group ranked first in the Gaïa Index for the industrial sector and third in the sector for companies with a turnover of more than € 500m.

Gaïa-index is a stock market index composed of 70 better notations regarding RSE, among 230 listed companies in the Paris Stock Exchange (excluding CAC 40).

Grand Prix for Companies and the Environment

Décember 2014

Manitou Group was awarded, by ADEME and by the Ministry for Ecology, Sustainable Development and Energy, in the category "Management and initiatives for sustainable development", REDUCE programme in particular.

Signatory to the United Nations Global Compact

June 2015

The UN Global Compact calls for companies to voluntarily align the companies' strategies and activities with 10 universal principles on human rights, labour, environment and anticorruption, and take actions that advance societal goals.

TOGETHER, LET'S REDUCE OUR CARBON FOOTPRINT



The material handling sector has not yet got a normalised cycle to measure the trucks' energy consumption. Manitou Group clearly shows its commitment to transparency by establishing an internal protocol, accessible to all, that can reveal its own measures of consumption (l/h) and CO2 emissions (kg/h). To provide the highest reliability, the data is checked and approved by an independent body, UTAC* specialized in the registration of vehicles and equipment.

SUSTAINABLE SOLUTIONS

To be THE material handling reference is to commit to innovate to offer you safe, efficient and sustainable solutions today and tomorrow.

TOGETHER

Manitou Group would like to accompany you in reducing your trucks fuel consumption to help cut back your carbon footprint.

INFORM

We have developed information and awareness tools (product labels, iPad simulator...) to inform you about our trucks' fuel consumption and emissions.

TEST PROTOCOL

Consumption measurements are performed on four representative activities of a telescopic forklift: handling, bulk loading, idle and road work.



APPROVED PROCEDURES

To validate orientations adopted by the Group in terms of fuel consumption, we wanted to validate our procedures via a recognised external body.



Calculate your fuel consumption:
<http://reduce.manitou.com>



*UTAC: Technical Union for the Automobile, Motorcycle and Cycle Industries performs official duty cycles in the automotive sector. UTAC is the only French Technical Service notified to the European Commission and the UNO for fuel consumption.

Manitou group range



Range	Compact telehandlers	Rough terrain forklifts	Medium and high lift telehandlers
Max. capacity t (Lbs)	6 (13,228)	7 (15,400)	4 (8,819)
Lift heights m (ft)	9,6 (31'6")	6,5 (21'3")	17,55 (57'7")
Brand	Manitou	Manitou	Manitou



Range	Pallet trucks	Stackers	Electric forklifts
Max. capacity t (Lbs)	5 (11,000)	2 (5,500)	3 (6,600)
Lift heights m (ft)	-	5,4 (17'7")	6 (19'7")
Brand	Loc	Loc	Manitou



Range	Skid loaders	Track loaders	Articulated loaders
Max. capacity t (Lbs)	1,8 (4,000)	0,9 (2,100)	1,2 (2,560)
Lift heights m (ft)	3,6 (144")	3,25 (128")	3 (120.3")
Brand	Gehl / Mustang	Gehl / Mustang	Gehl / Mustang

OIL & GAS SOLUTIONS



Heavy duty telehandlers	Rotative telehandlers	Aerial work platform *
40 (88,106)	5,5 (12,125)	3 pers
13,6 (44'60")	31,6 (103'67")	27,75 (91'1")
Manitou	Manitou	Manitou



Semi industrial forklifts	Industrial forklifts	Telescopic / masted mounted trucks
5 (11,000)	3,5 (7,700)	2,7 (5,940)
6 (19'7")	6,5 (21'3")	3,9 (12'8")
Manitou	Manitou	Manitou



Telehandlers**	Compact excavators**
5,4 (12,000)	4,7 (10,417)
16,8 (55.1")	3,55 (11'7.8")
Gehl / Mustang	Gehl / Mustang

* Some models are unavailable in North America

** Except Europe



Services Manitou range

Choosing Manitou Group equipment means above all opting for a complete solution. Manitou supports its customers throughout the world with the help of its 19 subsidiaries and a network of 1,400 dealers in more than 120 countries.

We respond to your needs over the entire life cycle of your machines.









■ **Network of dealers**

A network of experts at your service, whatever your activity.

■ **Maintenance contracts**

Three levels of contract that are tailored to your needs: Initial, Advanced and Excellence. Entrust the maintenance of your equipment to your dealer.

■ **Financing**

Lease or buy? Manitou Finance helps you choose the most suitable financing solution for your activity. Why look elsewhere?

■ **Warranty extension**

Thanks to them, you can extend the cover of your forklift for up to 5 years. Use your equipment with peace of mind.

■ **Fleet management**

Easy Manager is a simple and flexible tool for managing, optimizing and securing the operational monitoring of your machines.

■ **Second-hand**

In the market for second-hand equipment? The Manitou network offers a wide range of resources so you get the machine you need at the right price. Just visit used.manitou.com, our dedicated reference site for second-hand machines.

■ **Original spare parts**

With more than 125,000 references available, your dealer provides expertise and service on a daily basis!

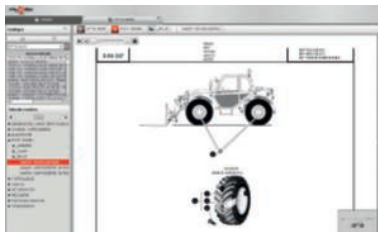
Spare parts



Our 8 spare parts centres



Spare parts centre



My Edoc



Overview

The Manitou Group has developed brands specialised in the maintenance and repair of your machines:

MANITOU, for original parts for your MANITOU machines, and XPRT, spare parts for GEHL and MUSTANG machines.

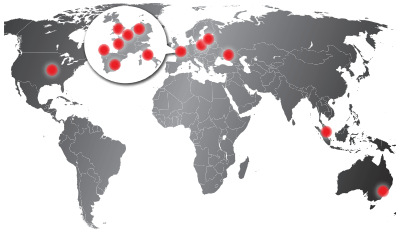
Availability, delivery and technical support

- 8 regional distribution centres to cover the entire globe and deliver between 24 and 48 hours
- More than 125,000 specific parts in stock, with an availability rate of 95%
- Parts available on the shelf through our network of 1,400 dealer locations
- Standard or custom-tailored transportation solutions
- Hotline and technical support from our network for spare parts recommendations and advice
- Availability of parts guaranteed for more than 10 years after the end of series life

Tips

By systematically employing original spare parts, you ensure the long-term performance of your machine

Training



Training centres

Overview

- 13 training centres throughout the world
- On-site customised training upon request
- More than 600 training sessions per year
 - maintenance of the machines and attachments
 - attachment utilisation
 - operator training



Training on-site



Training centre



Training in the training centre

Tips

Training your employees for increased safety during work

Financing and renting

MANITOU
FINANCE

Overview

MANITOU Finance provides flexible finance solutions tailored to your business needs. Offering a range of products including Hire Purchase, Finance Lease and Contract Hire, you can be sure that we have an option to suit you.

- Credit
 - owner of the machine at the end of the contract
 - choice of the duration between 2 and 7 years and the rate type
 - seasonal financing plan
- Leasing
 - choice of the duration
 - owner at the end of the contract
- Renting
 - choice of the duration between 1 and 5 years
 - option of integrating other services into the monthly fee (maintenance, warranty extension)
 - investment capacity preserved
- Full-service leasing
 - choice of the duration between 1 and 5 years
 - periodic maintenance
 - any necessary repairs

**available in specific countries only. Check with your dealer for eligibility*

Maintenance



Overview

- Maintenance contracts provide support by a qualified technician through regular maintenance operations and preventative inspections as indicated by the manufacturer.
- Our dealer network can offer various types of maintenance contracts. This ensures that:
 - your equipment is always in an optimal state of maintenance
 - repair costs are kept to a minimum thanks to regular check-ups - all maintenance work is compliant
- "Tailor made" maintenance contracts are available upon request, to suit your needs through our Manitou dealer network.

1.5

Warranty extension



Overview

Warranty extensions prolong the coverage of your equipment of up to 5 years. More peace of mind, more safety:

- support for parts and labour
- ensuring optimum use and minimum downtime
- increased value at resale. Use your equipment with peace of mind!



Tips

With a maintenance contract you are guaranteed the optimal use of your equipment with a minimum of downtime.

Fleet management



Overview

Keep an eye on your machines wherever you are! Easy Manager allows you to manage, optimise and secure your machine in real time and remotely.

3 simple and flexible options:

- INDOOR: fleet management
- OUTDOOR: fleet management & geolocation
- ACCESS: fleet management, geolocation & secure access control



Tips

EASY MANAGER informs you about upcoming maintenance work on your equipment. With a maintenance contract, you keep a handle on your costs and optimise the availability of your equipment during maintenance visits.

A close-up photograph of a yellow hard hat and a pair of blue safety glasses. The hard hat is in the upper half, and the safety glasses are in the lower half, resting on a yellow surface. A red curved graphic element is on the left side.

Safety first

Because safety is YOUR priority every day of the year, Manitou Group offers to its customers the safest material handling and personnel lifting equipment on the market (machines, attachments and options).
Discover our solutions: they meet the highest standards and increase the safety of your operators.



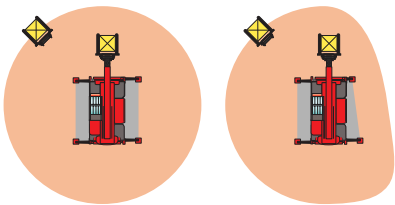
Intrinsic safety



CEC and LLMI



Leveling corrector



Customising and restricting the work area

Overview

The standard equipment provides operators with the best working conditions while complying with safety standards and international regulations:

- stability and all-terrain ROPS and FOPS Level 2 cabins in compliance with EN 1459 (Equivalent B56.6 "USA", AS 1418-19 Australia)
- the Load State Controller and Limited Load Moment Indicator (LLMI) monitor stability and reduce the risk of toppling over
- reversing alarm or lynx cry*
- audible start signal**
- battery switch off and emergency stop
- recognition of E-Reco attachment*
- terrain compensation*
- restricted work area**
- machine self-diagnostic*

*Depending on model

**Upon request

Work in complete safety with our telehandlers

Tips

For off-road conditions, verify that the load charts of your telehandlers comply with the regulations in force in your country (EN 1459, B56.6, AS 1418-19...)

Safety options



Fire extinguisher



Emergency stop button outside the cab



Electrical protection



Guardian Angel System

Overview

- Oil kit** made up of:
 - external emergency stop
 - spark arrestor and damper valve
 - 3-point belt
 - weighing system
- Brake system:
 - negative brakes: automatic braking in case of damage
 - daily brake test procedure
 - auxiliary braking and emergency steering: allows the machine to be evacuated in case of failure
- Control systems:
 - guardian angel system: monitoring of the machine's vital systems
 - verification of the tyre pressure
- Protection:
 - electrical protection
 - fire extinguisher system in motor compartment
 - thermal insulation of exhaust pipes and silencers - lost nuts indicator

**Upon request

More productivity with total safety

Tips

Clearly define how your telehandler will be used in order to select the options that are best suited to your needs

Cab



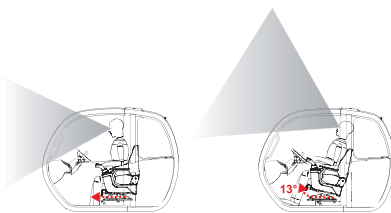
Cab FOPS ROPS



MRT P+ screen



JSM®



Tilting seat to follow the load

Overview

- Spacious and ergonomic ROPS/FOPS level 2 cabin (complies with EN1459)
- The Joystick Switch & Move (JSM®) allows all movements to be made with just one hand (attachment, telescope movements, move forward/backward/neutral)
- Simple and readable dashboard provides all required information at a glance
- 360° visibility in compliance with EN 15830
- Tilting seat to follow the load*
- Driver seat with mechanical/pneumatic suspension and low frequency damping (depending on model)
- Driver presence detector
- Seatbelt alarm**
- Windshield* and roof* grid
- Door safety lock**

*Depending on the model

**Upon request

Safety first

- Working under comfortable conditions reduces operator fatigue

More comfort means
more attention!

Lighting



Working lights on cab



Working lights (front and back) located high on the cab



Working lights

Overview

- Improve the visibility of the machine and the work area with:
 - rotating or strobe light*
 - headlights and direction indicators
 - reversing lights
 - working lights (front and back) located high on the cab*
 - working lights on boom (can be installed on boom head)*
 - LED or Xenon headlights** (optional headlight protection)

*Option

**Upon request

To maintain visibility
under all conditions

Tips

Adjust the options on your machine to match your work environment. Protect the headlights against impacts

Visibility



1 screen, 4 cameras



Signal lights for machine approach or withdrawal



Smart pedestrian detection camera/screen



Reflective strips

Overview

- Machine complies with the visibility standard EN 15830
- Cameras: improve visibility
 - at boom head
 - reversing camera: starts automatically when backing up (or continuous visualisation)
 - on the side(s) of the machine
- Smart backing up camera^{**}: the pedestrian detection system sets off an audible signal and a visual alarm on the cab screen (red edging) to warn the driver of the presence of a pedestrian
- Cameras protected against shocks and washable with a high pressure hose (IP67K), IP55 screens upon request
- Signal lights for machine approach (red) or withdrawal (green)^{**}
- Light reflector (reflective strips)^{**}

^{**}Upon request

See and be seen
for increased safety

Machine maintenance and servicing

Motorisation, filtration and greasing



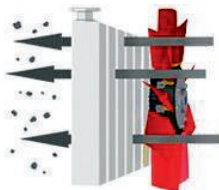
Central greasing



Intake protection



Exhaust gas dilution system



CLEANING

Automatic cleaning

Overview

Our machines are designed for easy maintenance. The following options make upkeep even easier:

- easy access to main components
 - optimised boom design to facilitate and minimise maintenance.
- Greasing* of hard-to-reach areas: oscillation of the rear axle, axis of hoisting and compensation cylinders
 - Automatic central greasing, whether continuously or per volume, of part of the machine or its entirety
 - Self-cleaning or cyclonic pre-filters
 - Intake protection of motor cooler, slows intake clogging
 - Automatic cleaning of the intake grille*
 - Variable speed fan (reduced fuel consumption)
 - Exhaust gas dilution system (special environments)
 - Machine maintenance and diagnostics displayed on the multi-function screen on the dashboard

**Depending on the model*

Safety first

- An investment made to:
 - reduce maintenance times
 - improve the safety of your operators and handling operations

Hydraulic options



Extra oil cooler



Option Manimach2: hydraulic connector



Reinforced synthetic fiber sleeves to protect the hoses

Overview

- Easy Connect System (ECS): depressurisation of the hydraulic line attachments without turning off the motor (makes attachment changes easier)*
- Additional hydraulic oil cooler (in case of extreme temperatures)
- Forced operation: continuous operation of the hydraulic line attachment for increased confort
- Casings in reinforced synthetic fibre** reinforce the high-pressure hydraulic lines to improve the safety of your employees and equipment
- Manual accelerator
- Regulation of the hydraulic flows of the attachment line*
- Protection of the hydraulic couplers at the boom head*
- Boom suspension (CRC) for the safe transport of heavy loads
- Energies and fluids available at boom head: electricity*/compressed air from an external or on-board source */water

*Depending on model

**Upon request

Tips

Choice of hydraulic options depends on the machine/attachment combination and its use

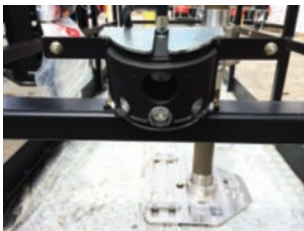
Assists driving and prevents shocks



Backing up sensors



Approach sensors on platform



Approach sensor on platform

Overview

Sensor-based obstacle detection systems can be adapted to our machines and/or to our aerial work platform baskets

- Backing up sensors at the back of the machines
 - progressive audible alarm in the cabin
 - configurable detection of distances
 - display of the detection state in the cabin
- Approach sensors on the aerial work platform:
 - audible and visual alarms in the basket at the approach of obstacles
 - automatic stoppage of movements in the aerial work platform
 - customisable detection distances
 - display of the detection state in the cabin and/or basket
- Laser detection on the boom (movement stopped in case of obstacle)
- Cameras + screen on basket
- Shock absorbing buffers

***Upon request*

Safety first

- Reduces the risk of collision/accident using ultrasonic sensors
- Secures the approach of your sensitive equipment/infrastructure during maintenance work

Special environments



Gas detector on MRT



Exhaust gas or vapor detection system



Grounding by rod



Antistatic chains

Overview

- Cab pressurisation and filtration
- Gas or explosive vapour detection system and automatic cut-off of the machine
- Grounding:
 - permanent by contact
 - punctual
- Protection against salt, acid or alkaline corrosion
- Temperature alarm
- "Oil" kit made up of:
 - 2 emergency off switches outside the machine
 - spark arrestor
 - damper valve
 - battery switch
- Extreme cold weather kit made up of:
 - special hydraulic oil
 - large capacity battery
 - engine block, diesel and hydraulic oil heater
- Confined environments:
 - dilution and purification system for exhaust gases
 - dual-energy machines

*Depending on model

**Upon request

Tips

Verify:

- the work environment of your machine
- the compliance of the equipment with the regulations in effect



4840

GEHL

Attachments

For more than 40 years, Manitou Group has been developing attachments to respond to your various needs optimally.

Do you need to handle equipment or loads with variable volumes, shapes and weights?

The quick-lock system allows you to easily and quickly equip your telehandler with a number of dedicated attachments. You gain in safety and efficiency.

The versatility of our telehandlers optimizes your investment and working hours, thereby increasing your productivity.

Purchasing a machine and its attachments from our team and experts guarantees a tested and proven machine/attachment combination, ensuring that your work is completed under the best possible conditions.





Pipe handling

3.1A Tube clamps



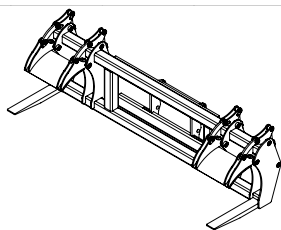
MT and clamp for very long tubes



MHT and tube clamp 14t



DL1155 (except Europe)



Clamp for tube longer than 12 meters

Overview

Working with tubes is a common task. Our tube clamps allow you to handle tubes under the best possible conditions:

- capacity from 2 to 14 tonnes (4,400 - 30,684lbs)
- tube diameters from 50 to 1,016mm (2" to 40")
- lengths up to 24 metres (80') (limited capacity)
- clamp opening of 90° allowing the clamp to be used as a fork

**Upon request

Safety first

- Use dual-pressure clamps to stabilise your load on rough terrain
- Verify the diameters, lengths, weights and number of tubes to be manipulated to select the clamp that best meets your needs
- Verify that the thickness of the forks is adequate to your storage constraints (storage battens)

Solutions from 2 to 14t
(4,400 - 30,864lbs)

Specifications

Tube clamp

Model	Capacity (kg/lbs)	Weight (kg/lbs)	Width (mm/ft, in)	Fork dimensions (mm/ft,in)	Tube diameter (Min/Max) (mm/ft, in)
PH 2500 – 14000*	14000 / 30,864	3800 / 8,377	2490 / 98"	120x240x2400 4.7x9.4x94.5"	50/1016 2/40"

* A version with thin forks (thickness 90mm/3.5") is available upon request: capacity reduced to 10t/22,000lbs

Model	Compatibility
MHT 10130	*
MHT 10180	✓
MHT 10230	✓

* Upon request

Load stabiliser*

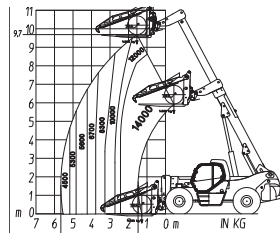
A range of load stabilisers, adjustable to your standard forks, is available upon request.

Capacity (tonnes/lbs)	Weight (kg/lbs)
3 - 5 / 6,600 - 11,000	360 / 800
6 - 10 / 13,000 - 22,000	760 / 1,700
12-18 / 26,000 - 39,000	1050 - 1260 / 2,300 - 2,800
10-20 / 22,000 - 44,000	2000 / 4,400

* Upon request



MHT + tube clamp



Load chart MHT + tube clamp 14t (30,864lbs)

Tips

Check the hydraulic and electric equipment of your machine to adjust the attachment



Load stabiliser on forks

Pipe handling

3.1B Tube grab



MRT2150 + tube grab



Tube grab



Tube grab



Tube grab

Overview

- Capacity up to 3 tonnes (6,600lbs)
- Tubes from 50mm (2'') to 300mm (12'') in diameter
- Tube length up to 6 meters (20')
- Solution defined according to your request and specification
- Multiple combined movements for a precise positioning of the tube:
 - machine: lifting/telescoping/inclination of attachment / rotation of the turret
 - rotation of the attachment head

**Upon request



Specifications

Solution	Capacity (kg/lbs)	Ø tube (mm/")	Attachment width (mm/")	Attachment weight (kg/lbs)	Grip strength (kN)
S1	500	100 / 300	785	235	11
	1.100	04 / 12	31	520	11
S2	1000	100 / 300	1275	310	23
	2.200	04 / 12	50	685	23
S3	2000	250 / 600	1365	865	25
	4.400	10 / 24	54	1.900	25
S4	3000	250 / 600	1630	1085	39
	6.600	10 / 24	64	2.400	39

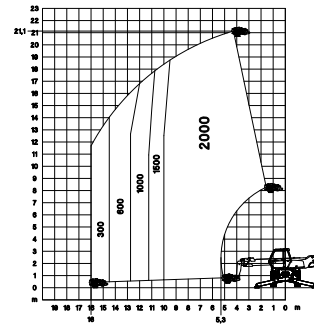


MRT2150

Tips

Verify:

- the diameter of the tube
- the offset of the tube's centre of gravity
 - the height of the offset platform
 - the length of the tube
- the grounding of each tube
- the number of use cycles/day



Load chart MRT2150 + tube clamp

Pipe handling

3.1C Coated tubes



Telescopic rudder



MHT + tube from 5m (16.5") and 2.5t (5,511lbs)



Vacuum handling

Overview

Some tubes must be handled by their internal diameter. Manitou offers solutions: vacuum manipulation, telescopic spreader or spur.

Our machine/attachment combinations offer all operating functionalities and increase the operator safety while protecting the integrity of the materials.

Please contact us to ask about custom-built solutions for tubes of any diameter or weight.

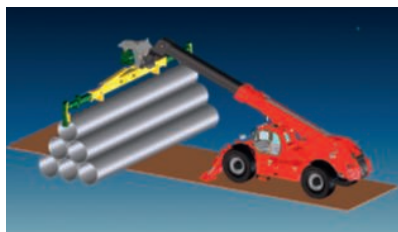
***Upon request*

A simple and efficient source of profit!

Tips

Use the attachment most suited to your tube products.

Versatility = efficiency.



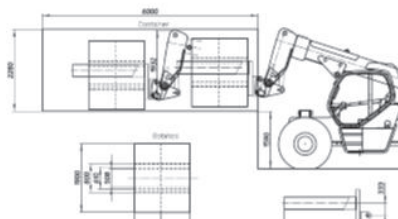
Telescopic rudder on MHT 35t (77,162lbs)



Telescopic rudder on MHT 35t (77,162lbs)



MHT handling a 12m (39.4'), 2.2t (4,850lbs) tube



MHT: loading 10 spools

Specifications

- Interior diameter: from 100mm (3.5") +
- Max weight: from 300 kg (660lbs) to 21t (46,297lbs)
- Tube length: from 6m (32.9") to 12m (39.4")
- The compatibility of the attachment/machine ensures upmost safety:
 - visual indicator of the load control
 - remote control
 - degree of freedom of lateral inclination
 - camera on boom head

**Upon request

Security and productivity

Tips

Check:

- Type of handling
 - T: type of tube/spool
 - P: max weight
 - L: length of tube/spool
 - ID: internal/external diameter
- Specify the handling method to respect the integrity of the tubes.

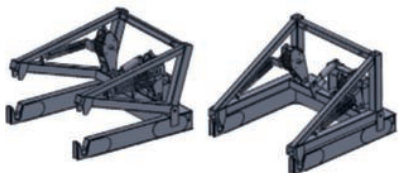
Reel handling**



CRH 2,5t (5,500 Lbs)



MHT + CRH 2,5t (5,500 Lbs)



Reel handler



Discover the attachment in an image

Overview

Designed to wind up, manipulate, transport and unwind cables, pipes, conveyor belts...

Compatible with the MHT range; we can design your reel handler according to your specifications. Specify the weight, diameter and width.

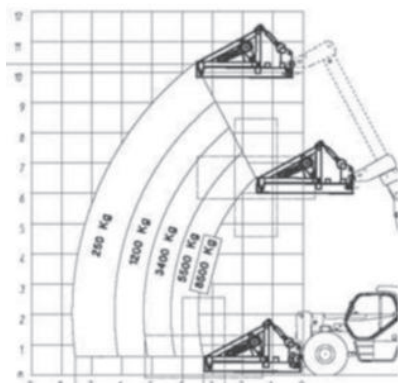
**Upon request

Tips

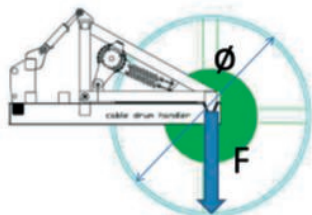
Handling your equipment with care ensures its long life! Flexible and secure winding/unwinding of cables - liners - plastic and metallic flexible pipes



MHT + CRH 5t (11,000lbs)



Load chart drum carrier



Reel handler

Specifications**

A careful design that offers the operator an unimpeded view of the handled load.

- Capacity up to 20 tonnes (44,000lbs)
- Compact and secure design
- Continuous rotary drive using friction to avoid damaging the equipment in case of blockage
- Easy to handle and maintain
- Combined movements are possible to improve:
 - the precision of the positioning
 - the speed of the turret
 - the speed of operations on the work site

**Upon request

**A simple design
for ease of use!**

Tips

To correctly define your attachment, remember to specify:

- Ø: external diameter
- F: total weight (turret + product)
- W: width alone

Forks and carriages**



MHT + forks 3m (9.8")



M50 with simple forks



MHT + standard forks



Large load

Overview

- Standard attachment designed for our all-terrain machines to help ensure loads are handled safely (to avoid the loss of, or damages to, loads during transport)
- A large variety of solutions to improve productivity and respond to all types of loads (dimensions, mass...)
- From the mast forklift to the telescopic telehandler, Manitou has all bases covered!

**Upon request

Safety first

- Forklifts that can be operated under all circumstances in compliance with all-terrain standards
- Robustly designed attachments for increased reliability and safety



MHT + forks 2.5m (8.2'')



Masted forklift + forks 3m (9.8'')



Superelevating ramp for loading and unloading container**




Rotating forks

Specifications

- Wide range of:
 - simple or floating forks
 - standard fork length or as requested
 - foldable** and telescopic forks
 - reversing fork
 - multi-fork carriage
 - fork positioner and spreader
 - Superelevating ramp improves access to loads at the bottom of the container
 - fork extension**
 - camera on fork**

**Upon request

 Increased productivity

Suspended loads*



MLT 845 + jib hook



Jib winch on MHT



MHT + rudder



MHT: unloading of a tank on a base

Overview

- Designed for specialist lifting and loading applications: elevation height adapted for the transportation of loads. All-terrain capacity for transportation purposes
- More than 100 attachments available, with load capacities running from 600kg (1,300lbs) with a hook to 40t (88,000lbs) with a winch
- Jibs:
 - short, long
 - jib winch
 - 3-hook winch
 - extensible with winch
 - adjustable jib...
- Hook
- Winches
- Rudder**
- Handler Big Bag (HBB): the most efficient way to transport your big bags

*Depending on model

The solution for the entire life of your projects: with its solid design, this range offers a wide variety of options for the handling of suspended loads.



Manipulator of big bags

Specifications

- The Manitou telescopic telehandlers equipped with a LLMI or a load state controller guarantee operator stability and safety under all work conditions
- Remote controlled boom movements*: ensure precision and safety in the positioning of the load, with a clear view of the surrounding area
- Compatible with all Manitou loading machines



Extensible winch jib



Jib: 3 possible attachment points for more flexibility



Winch

**Up to a working height of 32m (105'):
multipurpose telehandlers
as useful as a crane!**

Personnel lifting



MRT with platform basket



MHT + ORH basket 1,000kg (2,200lbs)



Platform 100 VJR

Overview

The complexity of the processes in your working environment requires rapid responses to avoid downtime. Manitou aerial work platforms and telehandlers facilitate the handling of loads and working at heights. They reduce the time required for your operations while improving safety.

- 3 types of machines:
 - telescopic telehandler + attachment: MT - MHT
 - dedicated platform: ATJ- AJT-AETJ (not available in North America)
 - rotary telescopic telehandler + attachment: MRT
- Robust design
- Work platforms with an integrated anti-collision system to reduce the risk of collisions with your infrastructures
- Limit Load Moment Indicator (LLMI), stability indicator: stops aggravating movements in the event of a loss of stability
- Platform complies with CE certification and the EN 280 standard (ANSI equivalent for the USA, AS1418.10 for Australia)



160 ATJ- articulated platform 16m (52.5'')*
*Not available in North America



Rotary MRT telehandler + aerial jib



Platform winch



Basket with steel manipulator

Specifications

- Solutions for working at heights from -10m (-33') up to 43.3m (142')
- Offset up to 26.1m (85.7'')
- Rotating basket (ORH):
 - working height up to 33.6m (110') with a capacity of 1,000kg (2,200lbs)
- Rotating basket with jib:
 - working height up to 34m (110') with jib of 450kg (1,000lbs)
- Pneumatic and/or electric supply to basket for the operator's tools
- Positioning assistance system using ultrasonic sensor
- Basket extendable from 2.25 to 6m in width (7.38' to 19.68')
- Basket with steel manipulator
- Predisposition available on MHT, MRT and MTMT

**Upon request

Tips

Verify:

- the working environment
- the required capacities
- the number of operators

Loading and re-handling



MLT 845: sludge transfer



MLT 845: sludge transfer



MLT 845 + re-handling bucket



Mini loader + bucket

Overview

- Another example of the versatility of our machines
- More than 30 different buckets to find the best solution for the task at hand:
 - CBC, CBR, CBG, CBA, CB 4x1: all types of buckets for the handling of bulk loads depending on their density (mud, sand, waste...)
- Solutions available to do or replace the work of a wheel loader

YOUR SOLUTION FOR LOAD HANDLING!

Compact and versatile telehandlers



Specifications

- Up to 4 tonnes (8,800lbs) and 4m³ (140 cubic feet) of load capacity
- Designed for simplified maintenance: removable and reversible blade, interchangeable teeth (depending on model)
- Reinforced structure

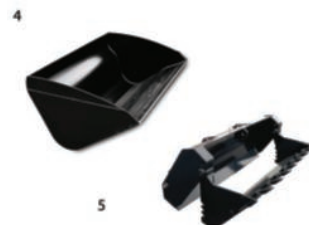


MHT780 + CBG 2000

*Depending on model	CBC (1)	CBR (2)	CBG (3)	CBA (4)	CB 4x1 (5)
Volume (L)	900	990	1270	4000	900
Volume (gal)	261.53	261.53	335.5	1056.68	261.53
Capacity (kg)	1890	2080	1520	4000	1890
Capacity (lbs)	4.166	4.585	3.351	8.818	4.166



Buckets CBC, CBR, CBG



Buckets CBA, CB 4x1

Simple, economic and efficient!

Drum handling**



Drum clamp



Drum clamp



Drum clamp



Drum clamp

Overview

- Our solutions can be adapted to our entire range of machines, from warehousing equipment to telescopic and masted forklifts to meet any type of requirement
- Diameters from 250mm (10") to 2,700mm (110")
- Weight from 300kg (660lbs) to 2,200kg (4,850 lbs)
- Handling of up to 4 drums simultaneously
- Frontal or lateral tilting up to 180°

**Upon request

More than 50 different types of clamps available

Tips

To define your attachment, specify:

- Type of drum (material)
- Ø: diameter of the drum
- H: height of the storage platform
 - L: height of the drum
 - : max weight of the drum

We can adjust the tools you are currently using.

Cleaning



Articulated loader 540 with cleaning brush



Use of the high pressure option to clean a hopper



Sweeper cleaner



Mini loader Gehl 4840

Overview

The Manitou Group offers solutions to facilitate the maintenance and cleaning of your infrastructures:

- sweeping of production sites
 - simple sweeper
 - sweeper with reservoir tank
 - adaptable sweeper on fork**
- high-pressure cleaner
- snow blades
- snow blower (on compact wheeled telehandlers)
- efficient solutions available for telehandlers and skid loaders

**Upon request

Non-conventional oil

3.9A Cylinder handler



CH10, max capacity 10.5t (23,148lbs)



CH10, max capacity 4t (8,820lbs)



CH10, max capacity 10.5t (23,148lbs)

Overview

Manitou has developed solutions that meet the needs of non-conventional oil fields, including oil sands in particular.

These solutions help optimise the maintenance of the excavators and dumpers of your mining fleet, and improve the productivity on site.

Safety first

- Using the cylinder handler, you can replace cylinders, bins and tubes:
 - capacity from 4t to 10.5t (9,000 to 23,000lbs)
 - safety: load is always held by the handler
 - remote control to carry out operations precisely and with perfect visibility
 - 8 combined movements
- Compact and sturdy shape to reach difficult areas
- Maintenance on any terrain
- Handlers designed for cylinders
- System to continuously verify the control of the cylinder (manometers, light and sound signals)



Discover the attachment in an image

Safety, productivity,
profitability

3.9B Tyre handler



Tyre clamps



TH 33 / 2000 S



TH63+, max capacity 16.3t (36,000lbs)



Discover the attachment in an image

Overview

The solution for quickly and safely changing, in any location and at any time, the tyres of dumpers, loaders, articulated trucks...

- Best panoramic view from the cab on the market.
- 8 solutions from 2t (4,400lbs) to 16.3t (35,935lbs)
- 3 designs:
 - narrow/telescopic/parallelogram pads
- 8 combined movements
- Protective arms to avoid the dropping of tyres
- Remote control for better visibility
- Stability control and stopping of aggravating movements

**Depending on model*

 Safety, productivity,
profitability

Tips

Verify the:

- monitoring of the work environment
- dumper/loader in maintenance position
 - diameter of the tyre to be handled
 - weight of the tyre (including rim)
 - presence of chains and/or rubber
 - accessibility



ATEX

Manitou Group responds to your ATEX equipment to help master the explosion risks associated with certain work environments. With your help, we define the specifications in order to understand the requirements of your day-to-day work environment.

A comprehensive study is then undertaken to respond to the requirements of zones 1, 2, 21 and 22, as well as the different temperature classes.

Our solutions cover all brands of the Manitou Group: Manitou, Gehl, Mustang and Loc, from warehousing equipment to telescopic forklift-trucks.

Please contact our teams for any questions about ATEX.







Electrical masted forklift



Stacker



MSI 25 T



170AETJ- Articulated aerial work platform 17m*
*Not available in North America

Overview

For many years, the Manitou Group has become a key partner for the most demanding industries.

To meet its customers' operating constraints, the group created the Manitou Competence Centre, a technical centre and assembly workshop that can manufacture and adapt certain models in the product range to zones with a risk of explosion.

Depending on your risk zone, we can offer you a:

- warehousing machine
- industrial 3t thermal or electrical masted forklift
- semi-industrial 2.5t
- telehandler
- electric access platform 17m

For any other model in our product line, your request will be studied comprehensively by our teams.

** Upon request

Customer advantage
1 machine manufactured in factory
= 1 unique certificate



Specifications

- Checking the surrounding atmosphere before starting the machine
- Safe startup of the machine with special badges
- Gas detection
- General cooling of the machine
- Grounding
- Insulation of the electrical circuits
- Anti-spark coating on attachments
- ATEX & Machine certification
- Attaching logos to machine

***Upon request*



MT 625



Skid steer loader



MT 625



Pallet truck

The background of the entire page is a blue-tinted image of the Earth as seen from space, showing the curvature of the planet and swirling white clouds. In the lower half of the image, there are two vehicles. On the left is a large, dark-colored construction vehicle, possibly a crawler crane or a similar heavy-duty machine, with a complex lattice structure on top. On the right is a smaller, dark-colored truck or heavy-duty car. Both vehicles are positioned on a flat, light-colored surface that reflects them slightly. The overall color palette is dominated by various shades of blue, from deep navy to bright cyan.

MANITOU

GROUP

A futuristic, glowing blue vehicle is shown from a low angle, positioned on a dark, reflective surface. The vehicle has a prominent, glowing blue light strip along its front edge and a vertical light bar on its side. In the background, a large, curved horizon line separates the dark surface from a bright, glowing blue planet or moon. The overall scene is illuminated with a cool, blue light, creating a high-tech, futuristic atmosphere.

Sustainable innovation

Your nearest dealer



 **MANITOU**
HANDLING YOUR WORLD

GEHL

MUSTANG

A full line of solutions for the oil and gas industry

Tube clamps Conveyor belts Jibs Man baskets
Drum clamps Cylinder handlers Hooks Tyre handlers Jibs winches



Head office

B.P. 10249 - 430 rue de l'Aubinière - 44158 Ancenis Cedex - France

Tel.: 00 33 (0)2 40 09 10 11 - Fax: 00 33 (0)2 40 09 10 97 - Email: oilandgas@manitou-group.com

www.manitou-group.com